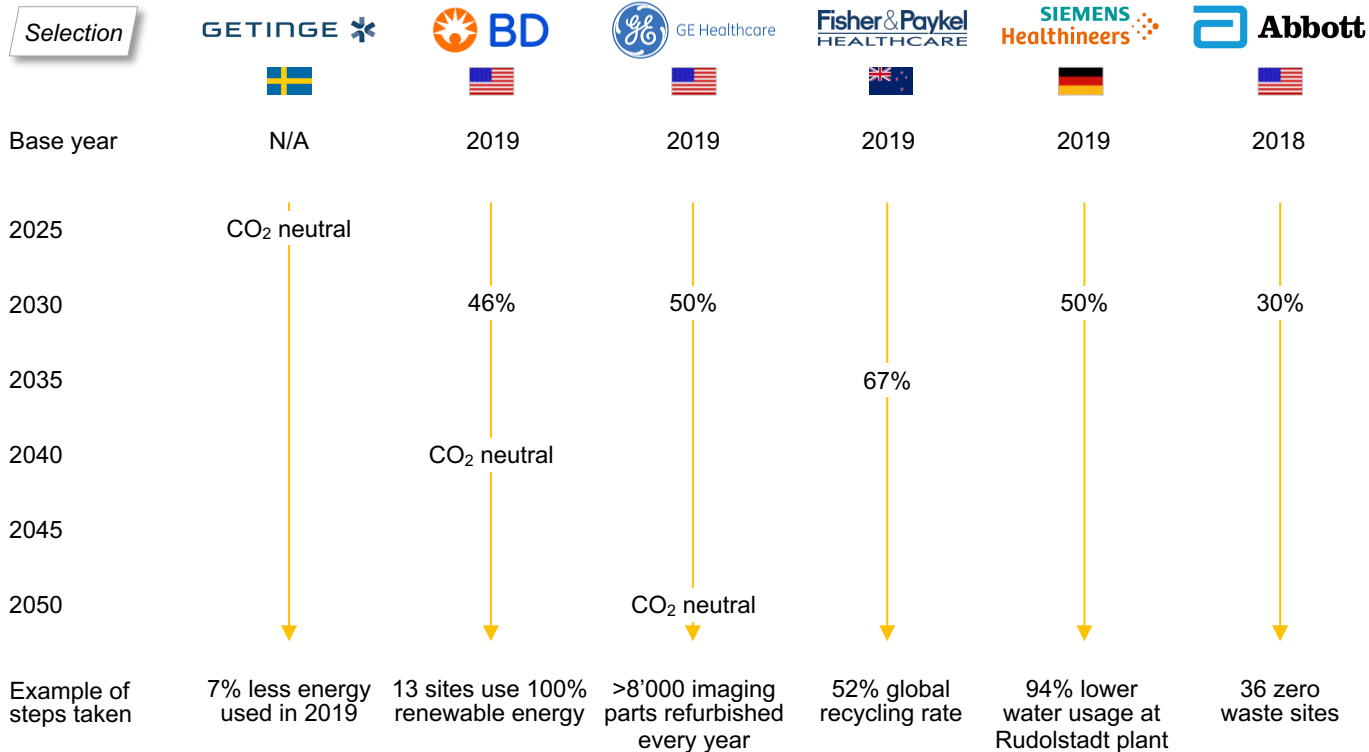


Medical device manufacturers are taking steps to be more sustainable. Getinge is a leader in this aspect, with the goal of becoming CO₂ neutral by 2025.

Reduction in Direct CO₂ Emissions (Scope 1 and 2 Emissions)



Learn More

What are direct CO₂ emissions?

- Emissions generated by the core business activities. Scope 1 are emissions from company facilities and vehicles; scope 2 come from purchased energy.

What does "CO₂ neutral" mean?

- It means that the company releases no CO₂ emissions (or its emissions are compensated with green activities).

How are CO₂ emissions calculated?

- A sustainability consultant adds up the emissions of the company's activities: electricity usage, fuel usage, waste generation...