

# How to treat medical waste? Innovative solutions decrease costs for hospitals and labs by converting medical waste into municipal waste. Recycling is still in an early stage.

## Selection of providers



Technology	Shredder and microwave sterilizer	Sorting center	Shredder and microwave sterilizer	Shredder and steam sterilizer	Shredder and steam sterilizer
Application	In-hospital and central facility	Central facility	In-hospital and central facility	In-hospital and central facility	In-hospital and central facility
Capacity	75 – 300 kg/h	500 – 1'000 kg/h	20 – 88 kg/h	3 – 100 kg/h	375 kg/h
End product	Municipal trash	Solid recovered fuel, plastics and residual	Municipal trash	Municipal trash	Municipal trash

### Decreased cost for hospitals:

- Converting medical waste to municipal
- Reducing volume up to 80%

With sorting center (limited) recycling possible

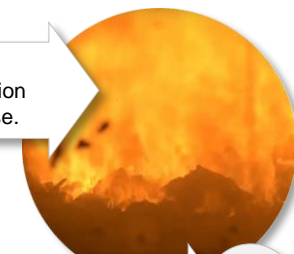
Pros

Cons

### Overall environmental impact largely unchanged:

- No CO<sub>2</sub> emission reduction (if no recycling)
- Higher electricity and water consumption

Most hazardous medical waste is incinerated under controlled conditions<sup>(1)</sup>. Waste incineration plants and crematoria are used for this purpose.



Small proportion is recycled.

